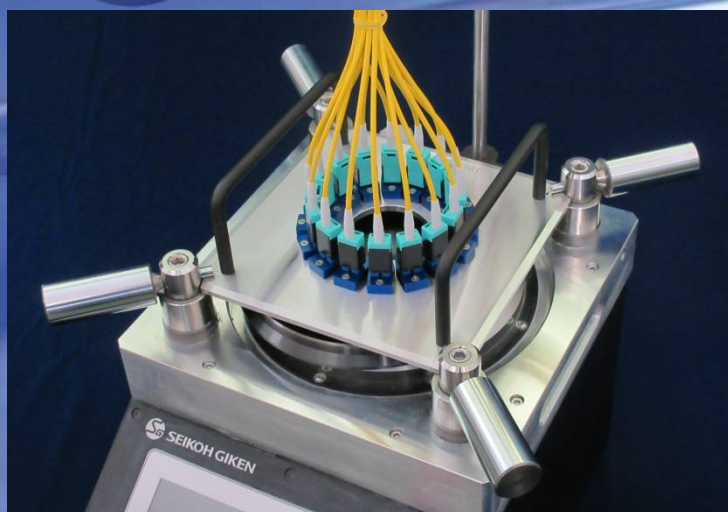




# SEIKOH GIKEN



## Duplex LC/PC with SFP-560A

Polishing Holder : PH55-PL-32DFX (*Fixed type holder with metal adapter*)  
Polishing Machine : SFP-560A in **DPC** mode

### ■ Features

#### ➤ For more stable endface geometry

Due to the structure of LC duplex connector, polishing the connector with IPC holder require cable management to stabilize cable tension. In this fixed type holder concept, it rigidly fix LC duplex connector and control optimized polishing pressure by SFP-560A' patented DPC pressure control technology.

Polishing Step	POLISHING CONDITION (DPC mode)						
	Polishing Pad	Film (service life)	Polishing Liquid	Speed (rpm)	Time (sec)	Press. (N)	1 <sup>st</sup> Step Mode
1	PR5X-500-85	GA5D(10)	PURIFIED WATER	110	20	None	FIX
2	PR5X-500-85	DH5D(30)	PURIFIED WATER	110	40	25.6	N/A
3	PR5X-500-85	DJ5D(30)	PURIFIED WATER	110	40	25.6	N/A
4	PR5X-500-85	XF5D(10)	PURIFIED WATER	110	40	25.6	N/A

Note : No clamp on the 1<sup>st</sup> Step

### WORLDWIDE SUBSIDIARIES AND SALES OFFICES:

#### North America

Atlanta, Georgia  
Tel: +1-770-279-6602  
Fax: +1-770-279-8839  
[sales@sg-usa.com](mailto:sales@sg-usa.com)

#### Europe

Frankfurt, Germany  
Tel: +49-6102-297-700  
Fax: +49-6102-297-750  
[info@sg-euro.de](mailto:info@sg-euro.de)

#### Asia

Matsudo, Japan  
Tel: +81-47-388-6111  
Fax: +81-47-388-4477  
[sales.div@seikoh-giken.co.jp](mailto:sales.div@seikoh-giken.co.jp)

#### China

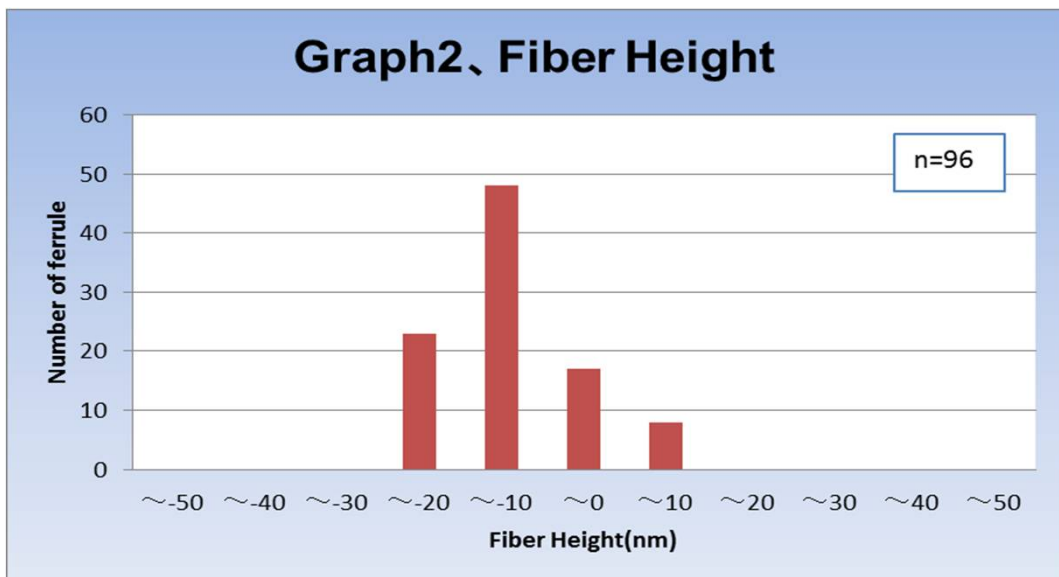
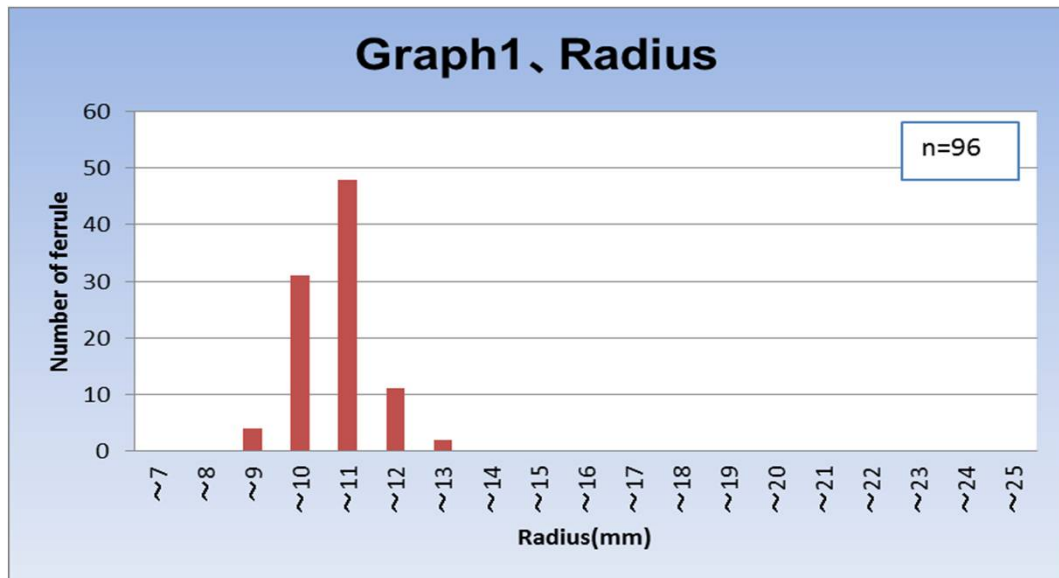
Hangzhou, PROC  
Tel: +86-571-8777-4098  
Fax: +86-571-8777-4099  
[sales@seikoh-giken.net](mailto:sales@seikoh-giken.net)

Seikoh Giken reserves the right to improve, enhance and modify features and specifications of Seikoh Giken products without prior notifications



# LC PC Duplex Fixed type Polishing Holder

## Performance



\*The negative value refers to the fiber protrusion.

